



CS 77 DOOR

BIM MODELS



CS 77 DOOR – BIM MODELS

Building Information Modelling (BIM) is an intelligent 3D model-based process where building information is shared between all members involved in the building process. AEC professionals like architects, engineers, general contractors and fabricators use BIM to plan, design, construct and build in a more efficient way. Architects can use the Reynaers BIM models from the start of the conceptual design stage, for better visualization, all the way to the realisation of the building, generating window schedules with detailed info on the used elements.

The Reynaers BIM models are completely parametric and include different design types, building connections and optional add-ons such as sills and shutters.

All models are downloadable on the Reynaers architect website and the website of Bimobject.



On the next sheets, it's possible to find the guidelines for using the Reynaers BIM-models.

CS 77 DOOR	
Thermal insulation	Uf = Down to 1.2 W/m²K, depending on the frame/vent combination and glazing thickness
Air tightness	Up to 600 Pa (Class 4)
Water tightness	Up to 300 Pa (Class 7A)
Wind load resistance	Up to 800 Pa (Class 2)
Acoustic performance	RW (C;Ctr) = 42 (-1;-4) dB, depending on the glazing type
Burglar resistance	Up to RC 2/RC 3 (WK 2/WK 3)
Fire resistance	EI1 30/EI1 60/EI2 30/EI2 60/EW 30

DOOR

14 MODELS

Miter/Plinth

- Inward Opening, Single Vent
- Inward Opening, Double Vent
- Outward Opening, Single Vent
- Outward Opening, Double Vent

Panel

- Inward Opening, Single Vent, One Sided
- Inward Opening, Single Vent, Double Sided
- Inward Opening, Single Vent, Spy Window
- Outward Opening, Single Vent, One Sided
- Outward Opening, Single Vent, Double Sided
- Outward Opening, Single Vent, Spy Window

Download:



OPTIONS INSIDE THE MODEL

BUILDING CONNECTION

- Type A: Netherlands
- Type B: Belgium
- Type C: International

CLOSING BOTTOM

- Automatic drop seal
- Threshold

CLOSING DOUBLE DOOR

- Double Casement Door
- ZT Door

DESIGN VARIANTS

- Functional

DIMENSIONS

- Height and width element
- Visible width frame
- Panel thickness
- Shutter roll height

FEATURES

- Shutter

OPENING DIRECTION

- DIN R
- DIN L

DIMENSIONS SPY WINDOW

- Spy width
- Spy height
- Spy top distance

MATERIALS

- Color inside/outside profile
- Panel material
- Shutter roll material

ANALYTICAL PARAMETERS

- Information parameters similar to information on website

LEVEL OF DETAIL

- Only bounding boxes

General parameters

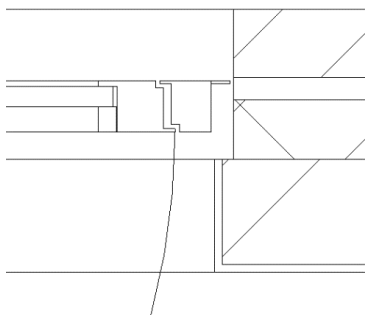
- Height EXT: Visible opening in outside wall
- Width EXT: Visible opening in outside wall
- Wall exterior width: Distance between front of the outer wall and front of the window (default 95mm)

Building Connections Type A-B-C

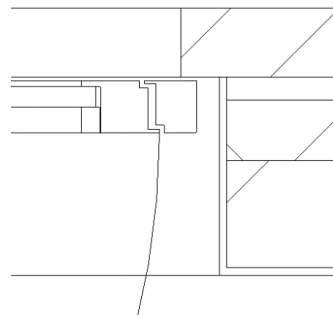
Building connections differ between countries. Reynaers BIM models include parametrical building connection information. For the convenience of the user we have predefined three types of connections (Type A, B, C) most commonly used worldwide.

- REY Building Connection Type A: Opening wall exterior > Opening wall interior
- REY Building Connection Type B: Opening wall exterior < Opening wall interior
- REY Building Connection Type C: Opening wall exterior = Opening wall interior

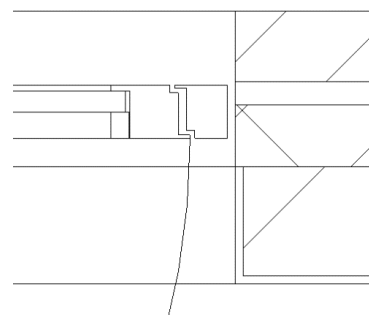
TYPE A



TYPE B



TYPE C



DIMENSION PARAMETERS

Parameters for Building Connections:

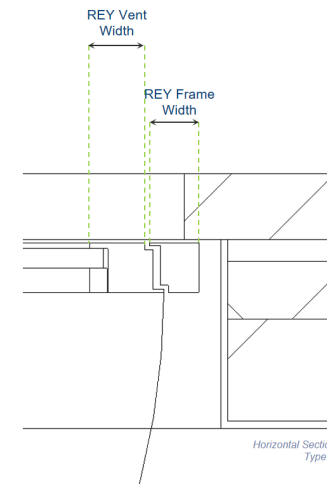
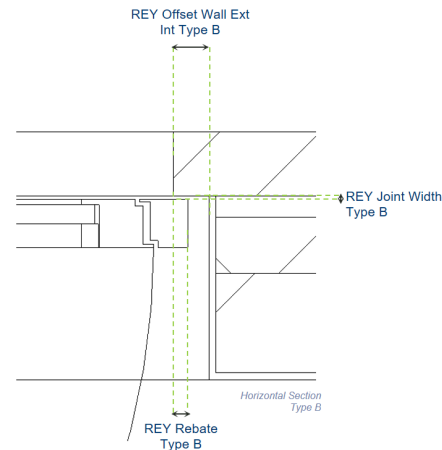
- REY Rebate: Distance between window and outside wall
- REY Offset Wall Ext Int: Distance between inside- and outside wall
- REY Joint Width: Distance between the inside of the outside wall and the front of the window profile

Other Parameters

- REY Panel Thickness: Thickness of the panel/glass (possibilities in brackets)
- REY Fixation Bottom: Distance between bottom side of the window and top of the inner wall
- REY Joint Bottom: Distance between top of the inner wall and top of the outer wall
- REY Shutter Roll Height: Height of the shutter roll (if activated)

Vent/Frame Parameters

- REY Frame Width: Visible width of the frame (possibilities in brackets)
- REY Vent Width: Visible width of the vent (possibilities in brackets)

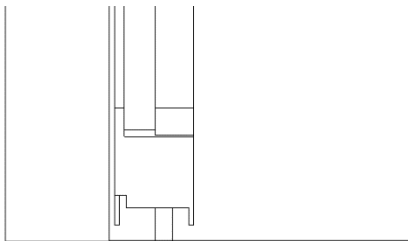


GRAPHICAL PARAMETERS

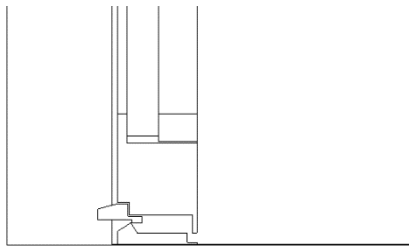
Parameters Closing Bottom:

- REY Automatic Drop Seal
- REY Treshold

AUTOMATIC DROP SEAL



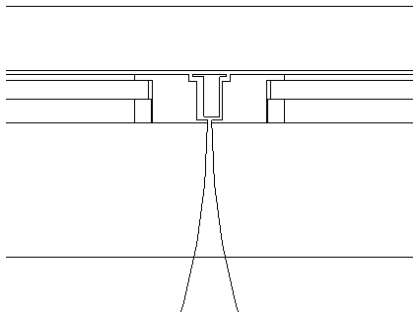
TRESHOLD



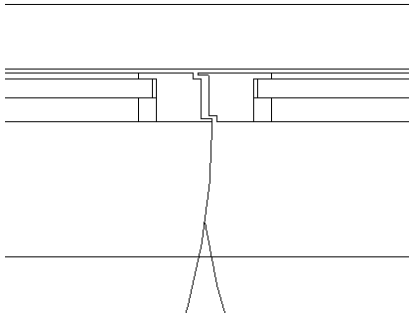
Parameters Double Door

- REY Double Casement Door
- REY ZT Door

DOUBLE CASEMENT DOOR



ZT DOOR



OTHER PARAMETERS

Graphical parameters

REY Shutter: Option to add a shutter

REY Opening Direction: Option to choose between DIN R or DIN L

Material and Finishes

Materials for the profiles (inside and outside), the panel and the shutter roll can be chosen.

Reynaers materials

The most popular RAL colours are created as Reynaers materials and can be transferred to your project or your own template:

RAL 9005, RAL 7021, RAL 7016, RAL 9010, RAL 9001 and RAL 7039

Analytical Parameters

List of analytical parameters that can be used in calculations.

For example: REY Panel Surface Total, REY Panel Surface Visible, REY Uf, REY Rw, REY Air Tightness, REY Wind Load Resistance, REY Water Tightness, REY Burglar Resistance, REY Fire Resistance,...



TOGETHER FOR BETTER